

General Specifications:

Total Fixture Output: 6.5 klm

Light Engine Output: 15 klm

Efficacy: 15 Lumen/Watt

Lens Option: N/A

Zoomrange: 12-36°

CRI: 80+

CQS: 85+

TM-30 Rf: 80+

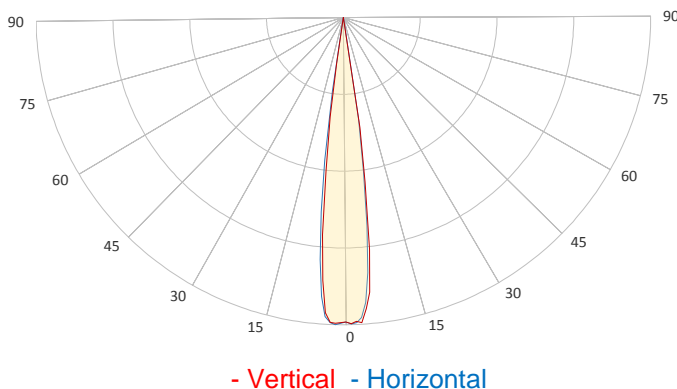
TM-30 Rg: 105+

TLCI: 80+

Color Temperature: 6500 K



Measurement



Catalog Number: 90250005HU

Measured Output: 6310 lm

Measured Peak: 124884 cd

Consumed Power: 430 W

Efficacy: 14.7 Lumen/Watt

Beam Angle (50%): 14.6°

Field Angle (10%): 18.2°

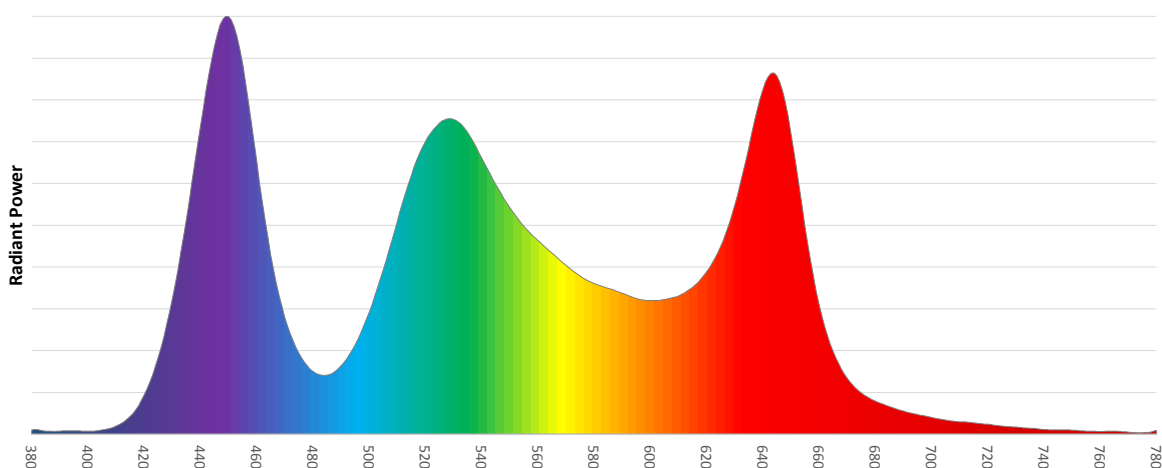
Cutoff Angle (3%): 18.8°

Measurement Condition:

Ambient Temperature: 25 +/- 5C

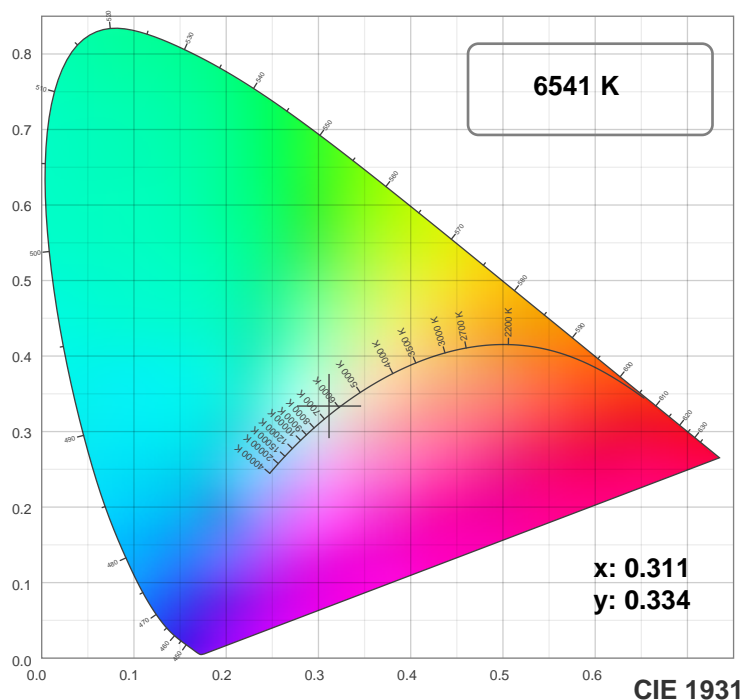
AC Supply: 230V/50Hz

Spectral distribution

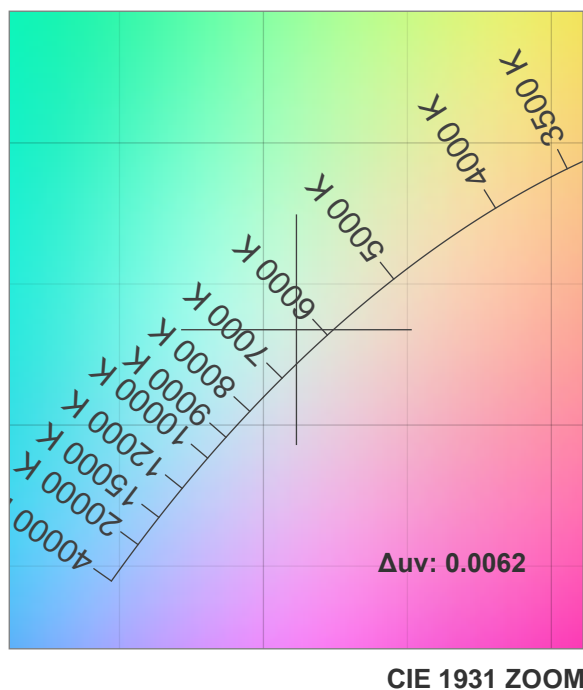
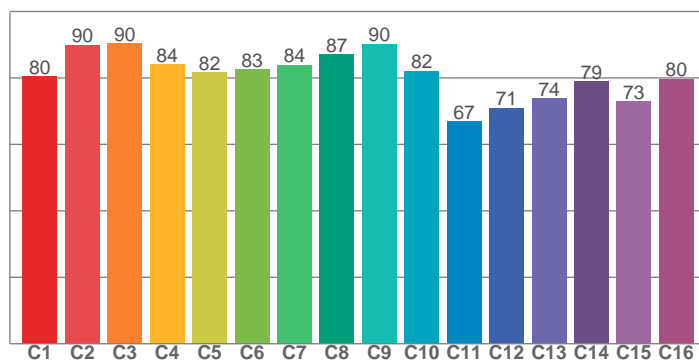


Chromaticity

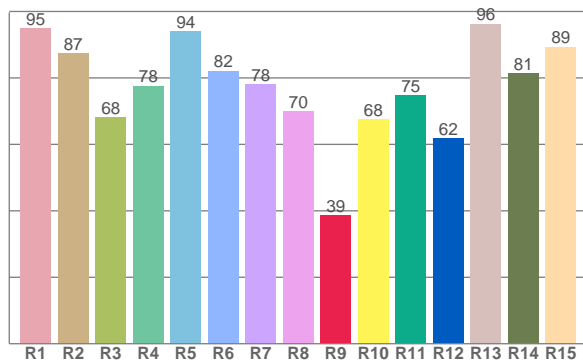
MAC Allure Profile – Medium



TM30: 81.5



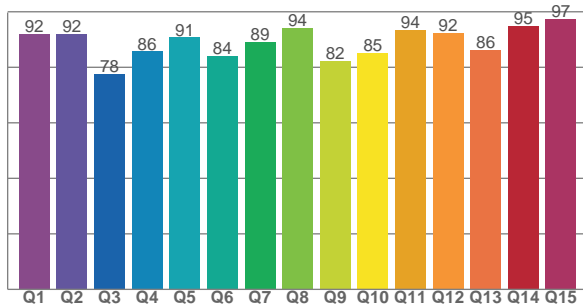
CRI: 81.5 (R1-R8)



Color Parameters

Color Temperature	Color Rendering Index	Red Component	Color Fidelity	Color Gamut
CCT	CRI	CRI R9	TM30 Rf	TM30 Rg
6541 K	81.5	38.7	81.5	108.6

CQS: 87.9



Television Lighting Consistency Index	Color Quality Scale	Color Coordinate CIE 1931	Color Coordinate CIE 1931	Color Coordinate CIE 1964	Color Coordinate CIE 1964	Color Diviation from Black Body
TLCI	CQS	x	y	u	v	Δuv
80+	87.9	0.311	0.334	0.195	0.314	0.0062

TM30 MAC Allure Profile – Medium

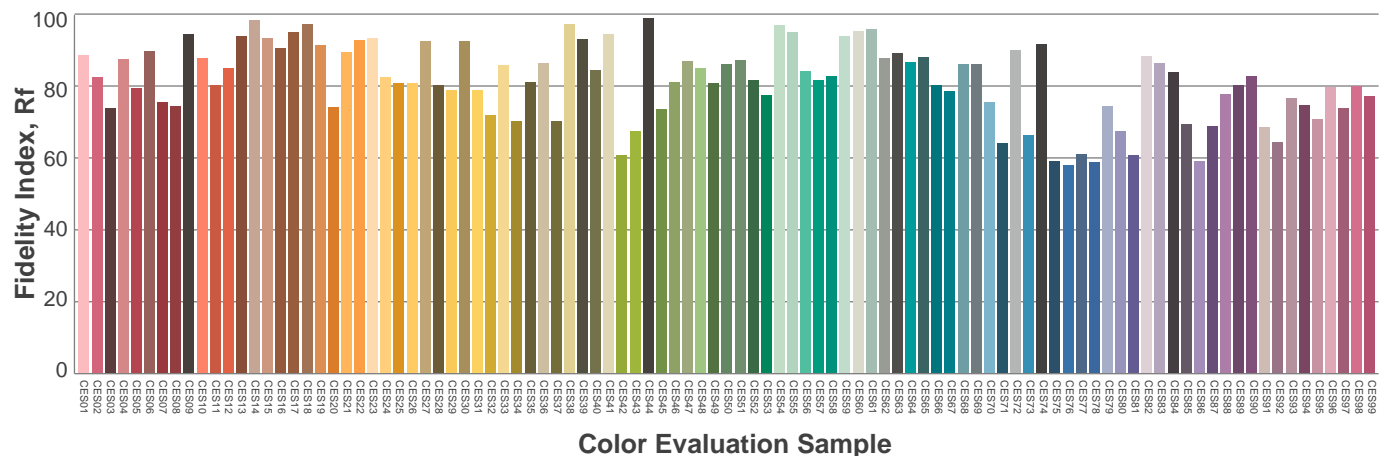
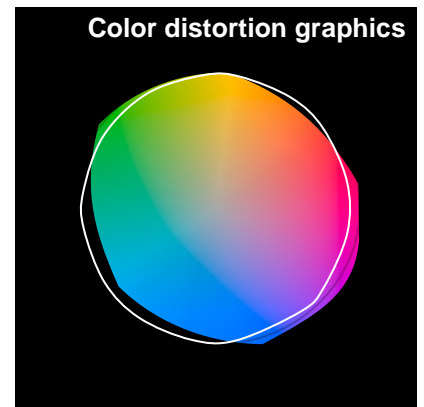
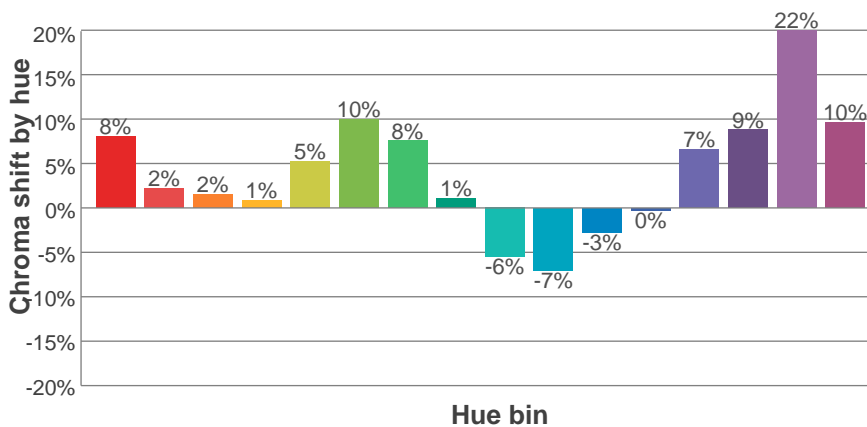
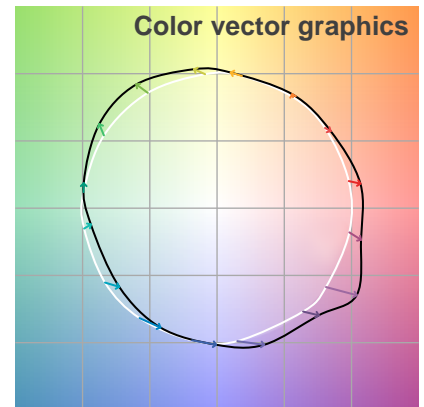
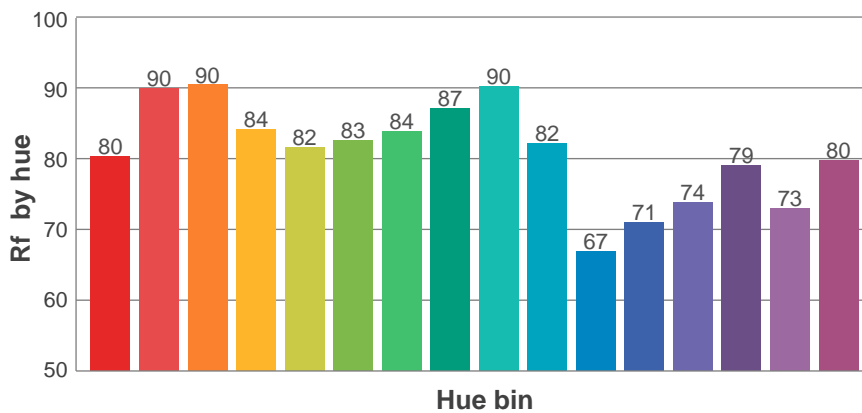
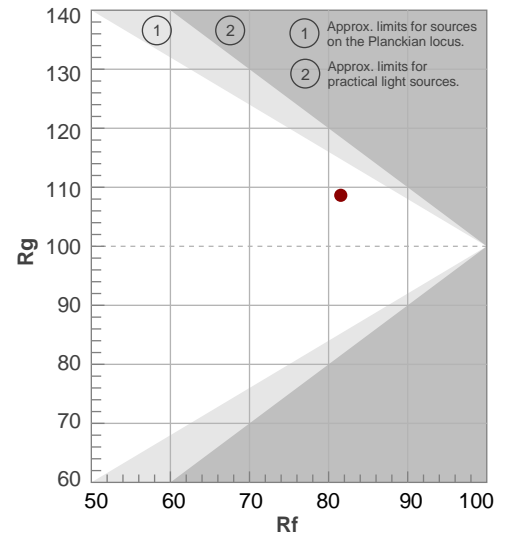
Rf 81.5

Fidelity index Rf

Rg 108.6

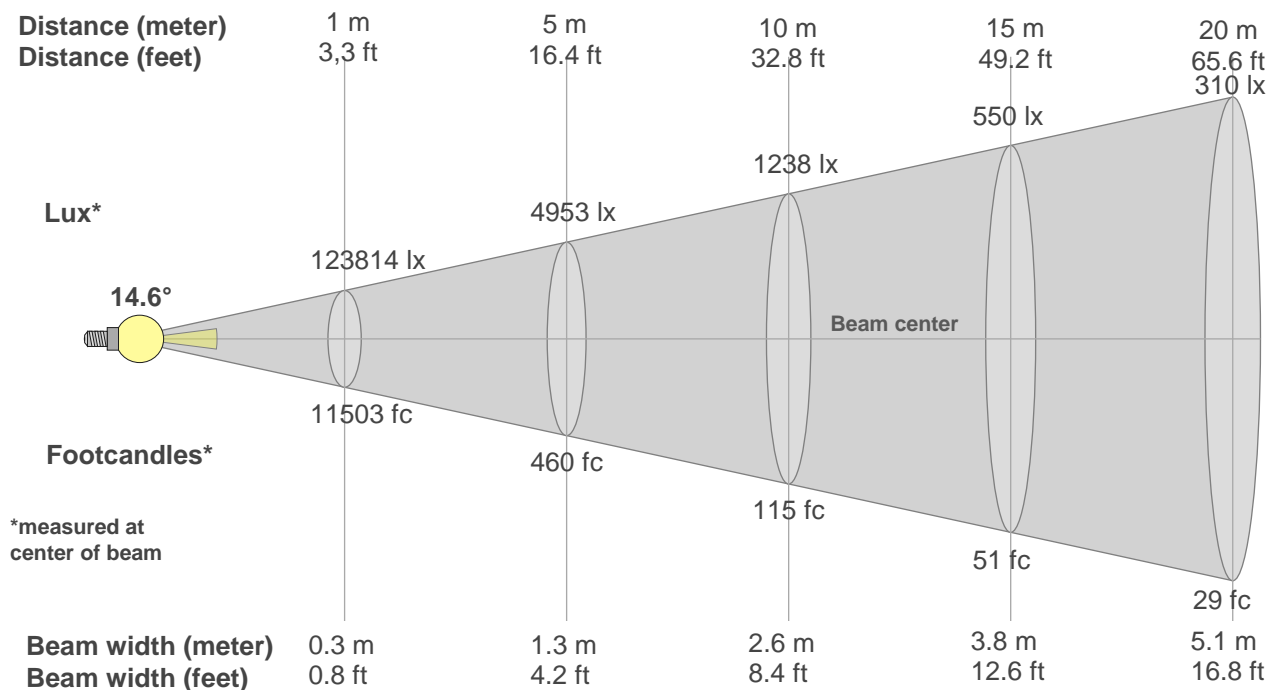
Gamut index Rg

Hue Bin	R _f	Graphic shifts (%)	
		Chroma	Hue
1	80	8%	-4%
2	90	2%	-4%
3	90	2%	2%
4	84	1%	9%
5	82	5%	7%
6	83	10%	4%
7	84	8%	-5%
8	87	1%	-6%
9	90	-6%	-2%
10	82	-7%	9%
11	67	-3%	17%
12	71	0%	18%
13	74	7%	19%
14	79	9%	8%
15	73	22%	8%
16	80	10%	-4%



Beam Details

MAC Allure Profile – Medium



Beam width:

Beam luminous intensity formula:

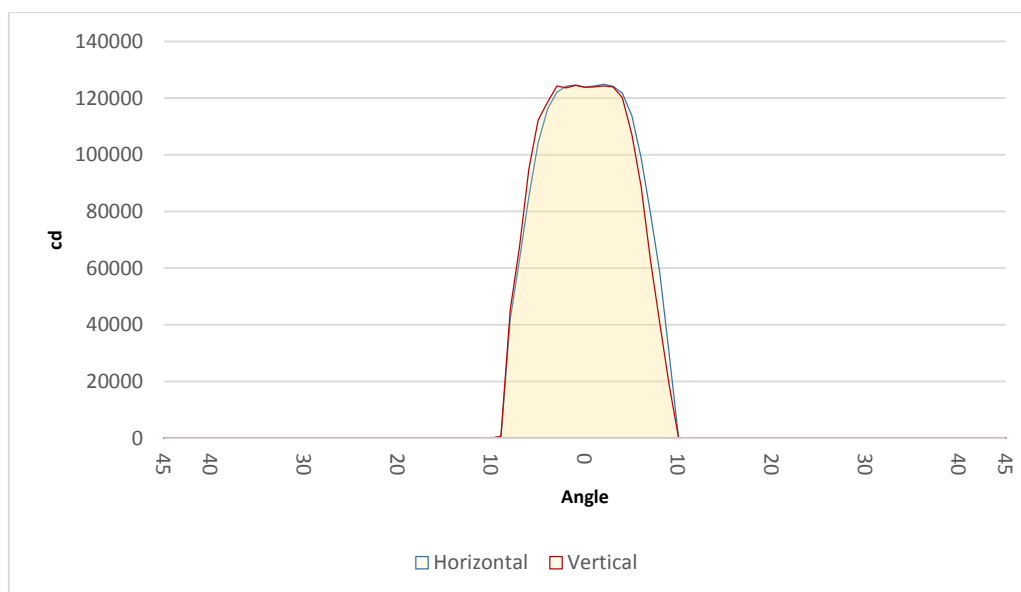
$$w = 0.3 * \text{distance}$$

$$\text{lux} = 123814 / (\text{distance}^2) \text{ (where distance is in meters)}$$

$$\text{fc} = 123814 / (\text{distance}^2) \text{ (where distance is in feet)}$$

Beam illuminance from 1-20m

1m	2m	3m	4m	5m	6m	7m	8m	9m	10m	11m	12m	13m	14m	15m	16m	17m	18m	19m	20m
3.3ft	6.6ft	9.8ft	13.1ft	16.4ft	19.7ft	23ft	26.2ft	29.5ft	32.8ft	36.1ft	39.4ft	42.7ft	45.9ft	49.2ft	52.5ft	55.8ft	59.1ft	62.3ft	65.6ft
123814lx	30954lx	13757lx	7738lx	4953lx	3439lx	2527lx	1935lx	1529lx	1238lx	1023lx	860lx	733lx	632lx	550lx	484lx	428lx	382lx	343lx	310lx
11502.7fc	2875.7fc	1278.1fc	718.9fc	460.1fc	319.5fc	234.7fc	179.7fc	142fc	115fc	95.1fc	79.9fc	68.1fc	58.7fc	51.1fc	44.9fc	39.8fc	35.5fc	31.9fc	28.8fc



Beam angle 50%	Field angle 10%	Cutoff angle 3%
14.6°	18.2°	18.8°